

# Another "How to" for *NoteWorthy Composer 2.5*

---

## How to use the command Insert: Boundary Change

You can use this command to affect the printed score if you want

- ❖ A printed song with a different number of staves at different times
- ❖ To print more than one song on a page
- ❖ A gap in the song

**Boundary** | Visibility

Change the printed staff boundary offset

Set new boundary offset:  Upper: 8  Lower: 8

Reset to default

Collapsing/hiding a printed staff

Start a collapsible section

Cancel/forbid collapse from this bar


Stand alone print instructions

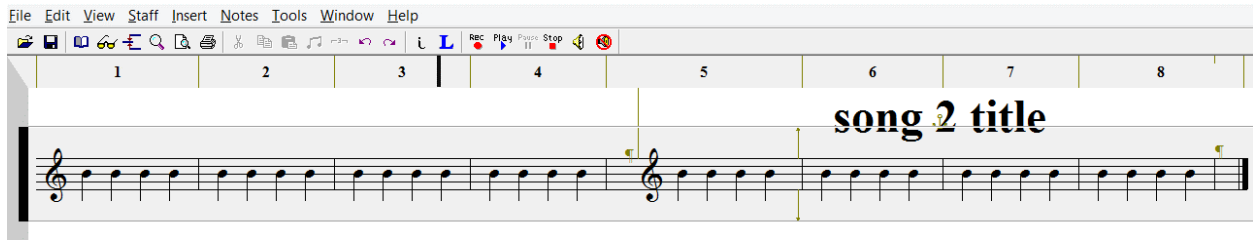
Gap the staff: Width: 2.00  System connections (top staff only)

Force a new system (top staff only):  Start a new page

You can read the specifics of each item in the above dialog box in the Help file of the program. The following shows examples of what the command can do.

### Example 1 – Putting more than one song in a file for printing

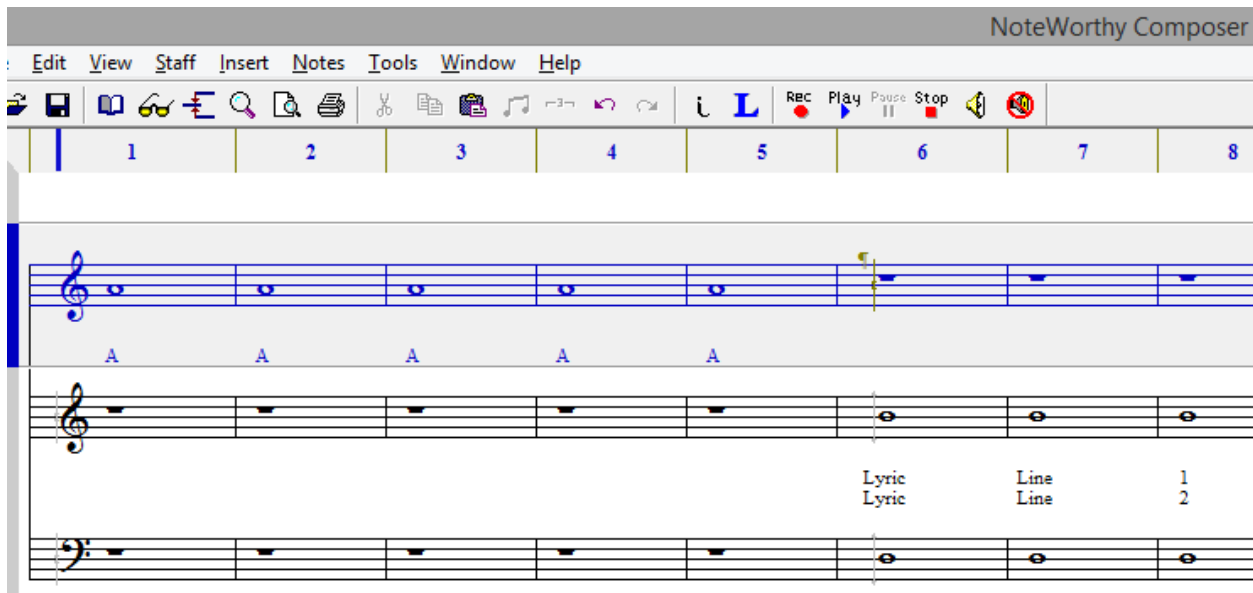
Download the file *boundarychange2songs.nwc* song file to see the commands used. Select the item and press Alt+Enter. For example, at the start of measure 5 if you select  and press Alt+Enter you will see this is the Insert: Boundary Change – Force a new system (top staff only). If you select the vertical line to the right of that, this is the command Insert: Boundary Change – Set new boundary offset.




When you go to File: Print Preview for the file, you will see



Example 2 – Printed song with one staff, 2 staves, back to one staff



Download the file *boundarychangerefrain.nwc* song file to see the commands used. Select the item and press Alt+Enter. For example, at the start of measure 6, if you select  and press Alt+Enter you will see this is the Insert: Boundary Change – Force a new system (top staff only). The item to the right of that is “start a collapsible section” because you want that bar to stop/collapse. The next staves have “start a collapsible


section" at measure 1 and a "Cancel/forbid collapse from this bar" because you want it to start to be shown.

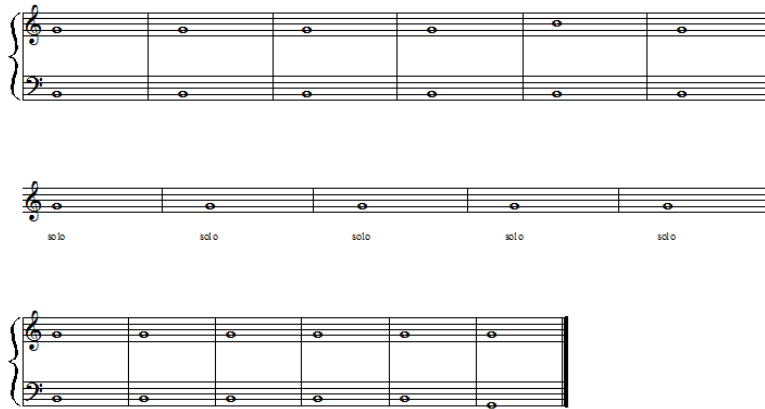
When you go to File: Print Preview, you will see

The image shows three systems of musical notation. The first system consists of a single staff with five measures, each containing a whole note 'A'. The second system consists of two staves: the top staff has six measures of whole notes, and the bottom staff has lyrics: 'Lyric Line 1' under the first measure, 'Lyric Line 2' under the second measure, 'Lyric Line 1' under the third measure, 'Lyric Line 2' under the fourth measure, 'Lyric Line 1' under the fifth measure, and 'Lyric Line 2' under the sixth measure. The third system consists of a single staff with six measures of whole notes, each containing an 'A'.

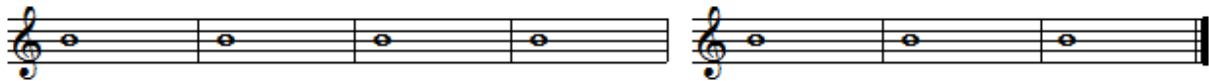
### Example 3 – Printed song with 2 staves, one staff solo, back to 2 staves

The screenshot shows the NoteWorthy Composer interface. The title bar reads 'NoteWorthy Composer - [boundarychangesolomiddle \*]'. The menu bar includes 'File', 'Edit', 'View', 'Staff', 'Insert', 'Notes', 'Tools', 'Window', and 'Help'. The toolbar contains various icons for editing and playback. The score area shows a piano arrangement with two staves (treble and bass clef) for the first six measures, followed by a solo section for the next five measures (measures 7-11) where only the bass staff is active, and then two staves again for the final two measures (measures 12-13). A blue vertical bar highlights measure 7, and another blue vertical bar highlights measure 12. The word 'solo' is written below the bass staff for measures 7 through 11.

Download the song file *boundarychangesolomiddle.nwc* to see how the command Insert: Boundary Change was used at measures 7 (start a collapsible section) and 12 (cancel/forbid collapse from this bar). Remember, the  are "Force a new system" markers. When, you go to File: Print Preview, you will see



#### Example 4 – Creating a Gap in the Staff



Simply use Insert: Boundary Change, check Gap the staff

#### Tips:

- ❖ Force a new system (top staff only) will need to be used to force placement.
- ❖ If the staff that you want to appear or disappear does not fill an entire line, there will be no change to the printed score